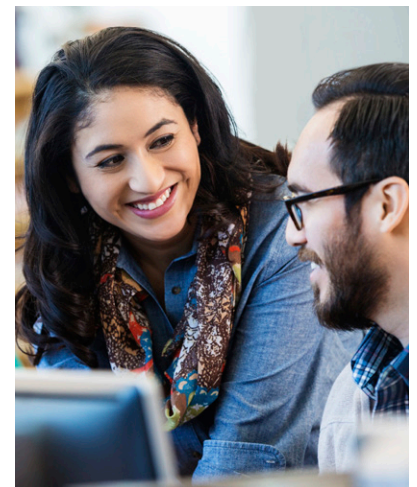


\$1500 SCHOLARSHIPS

FOR NONTRADITIONAL STUDENTS

ARE YOU:

- » Returning to school after being out of education 1 year or more?
- » Enrolled in or attending a 2-year degree or certificate program?
- » A resident of Los Alamos, Mora, RioArriba, San Miguel, Sandoval, Santa Fe, or Taos County?
- » A high school graduate or GED recipient?



APPLY for a Regional College/Returning Student Scholarship at www.lanlfoundation.org/scholarships

Application deadline is May 31.

For more information, contact John McDermon at 505-753-8890 ext. 115, scholarships@lanlfoundation.org.



LOS ALAMOS
National Security, LLC



LANL 20 YEARS
FOUNDATION
*Investing in Learning
& Human Potential*

lanlfoundation.org